

# Keys to Managing Technical and Business Visions - Sustainability Factors

John Wulf Corporate Project Manager

March 26, 2014

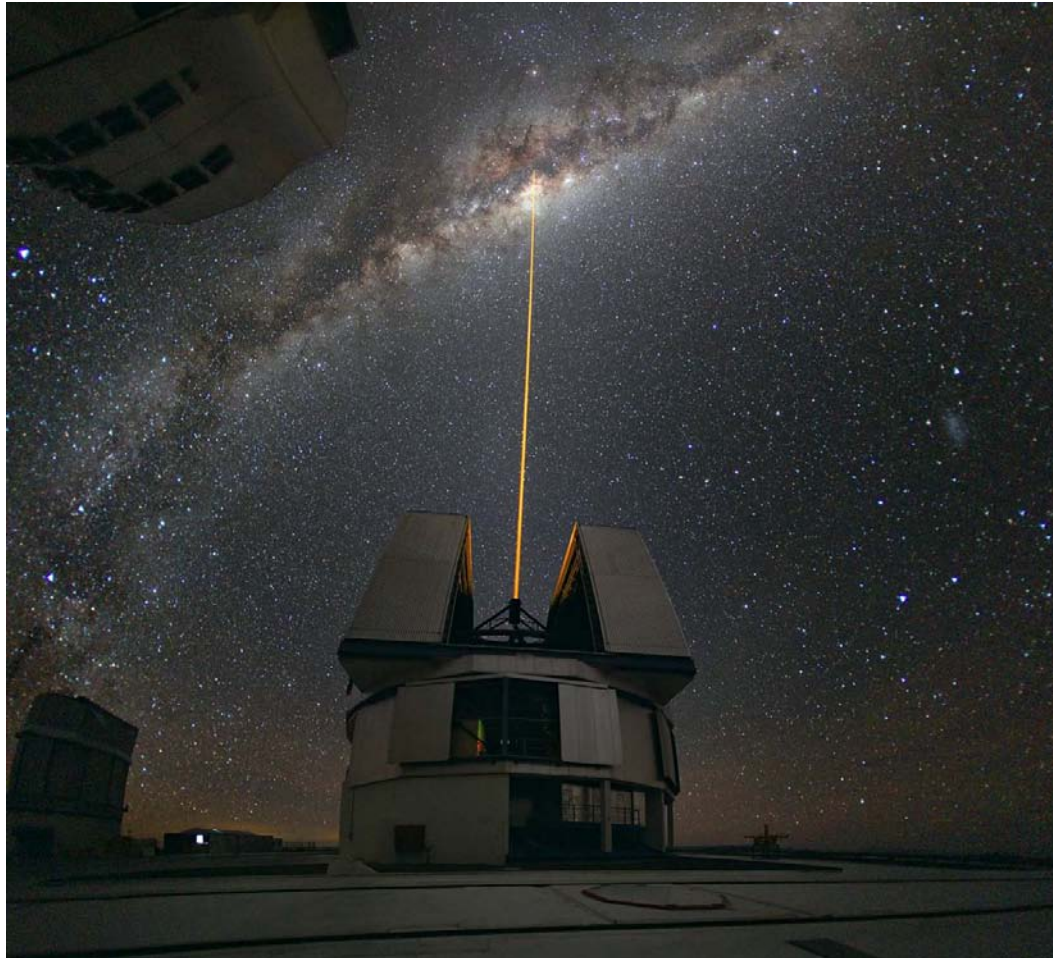
GRID |

**ALSTOM**

# Keys to Managing Technical and Business Visions

- Program Office/Project Management
- Long Term View
- Golf
- Strategic Partnership Results

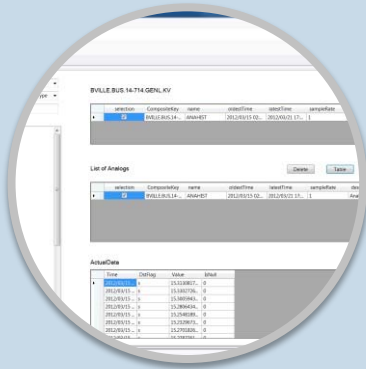
# Project Management Need to Focus on the Long Term While Delivering to the Short Term



# Business Drivers and a Vision of How Your Project Supports the Business drivers

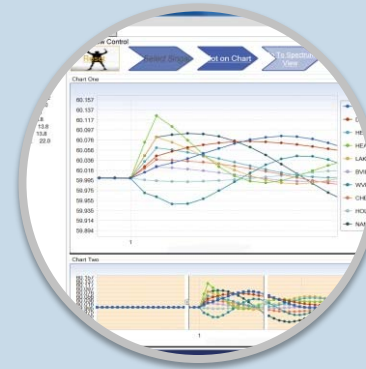


## Advanced Presentation Foundation



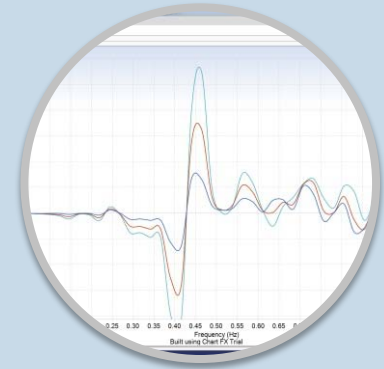
## Efficient Data Management

- Hierarchical Data Structure
- Easy and fast Filtering



## User-Friendly Interface Design

- Fully control and interactive communications



## State-of-art Analysis Algorithms

- Trending and Stats
- Spectral Analysis

### Data Source

- ETA
- Phasor
- TSAT

### Data Selection

- Data Source Selection
- Alarm Display

### Data Conditioning

- Time Alignment
- Filtering

### Data Analysis

- Trending
- Spectral Analysis
- Statistics

Result

GRID

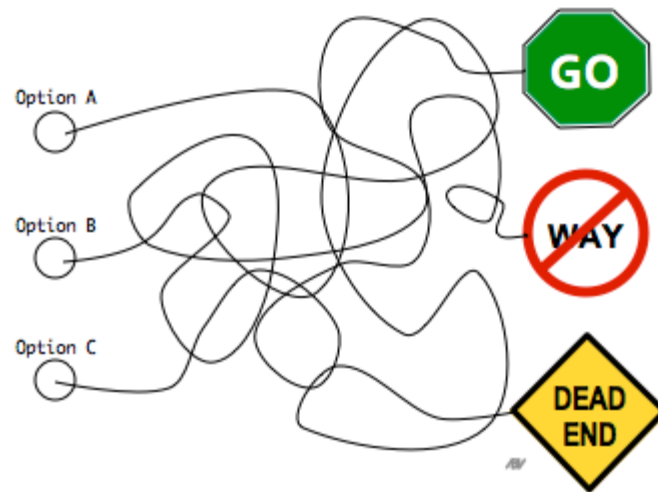
ALSTOM

# Program Office

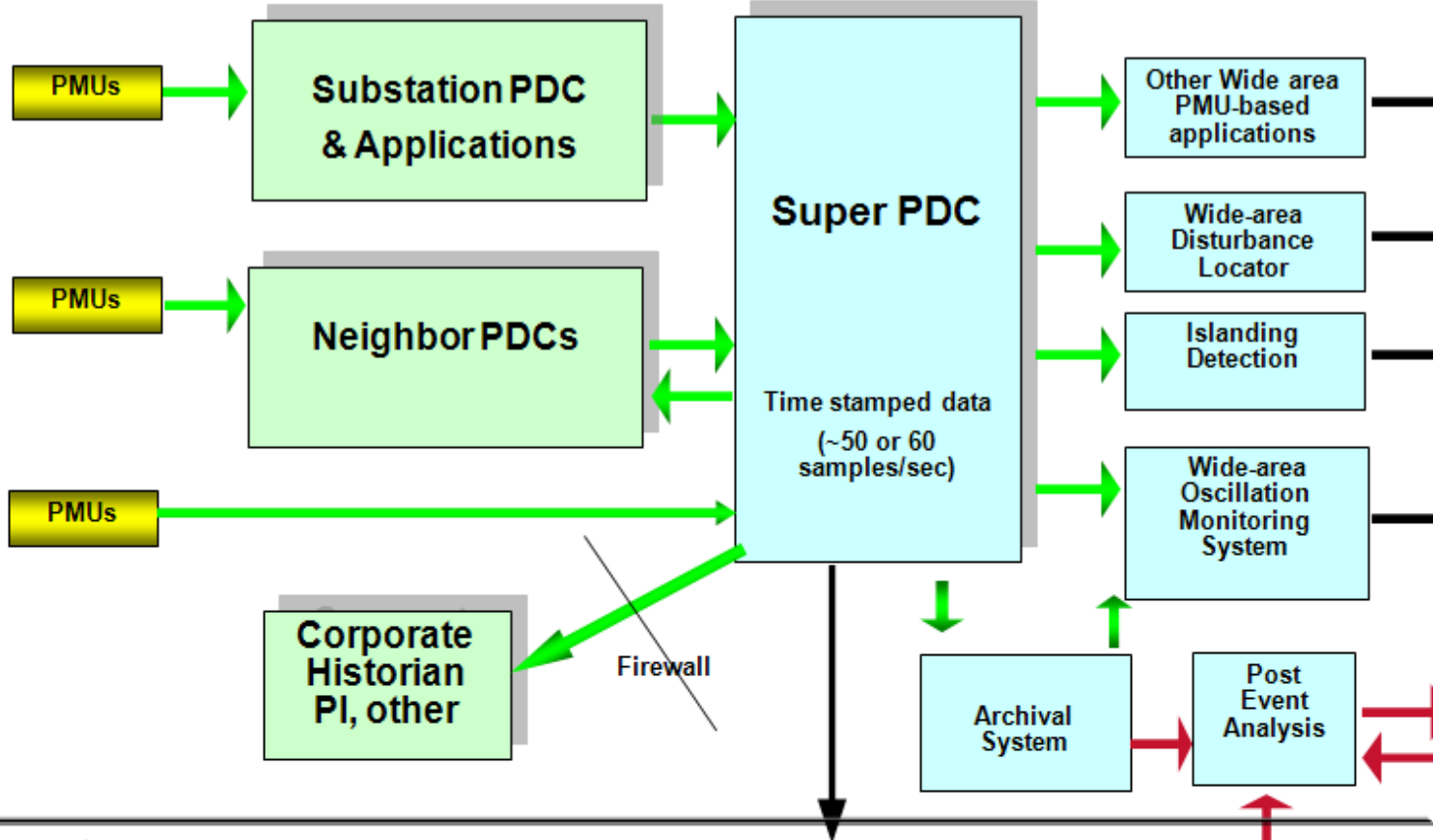
- Leadership Support from the Executive Sponsors
- Provide team leadership and involvement for all multi-functional groups through end users
- Strategy
- Continuity to the project implementation to use of the system
- Keeping the Executive Sponsors updated and working with Executive Sponsor on changing priorities.

# Options and Strategy

Everybody clear about your options?

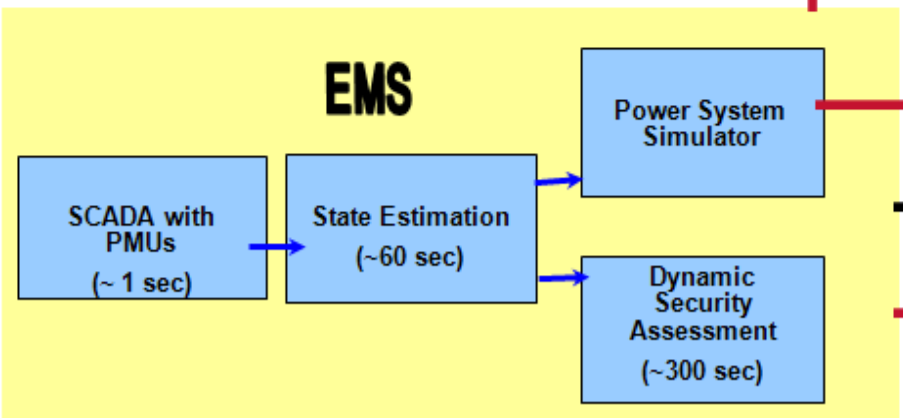


**NEW PMU-based Applications**  
(reside outside traditional EMS)



**PMUs in EMS Applications**

- Green arrow: 50-60 samples/ second
- Black arrow: 1 sample/ second
- Red arrow: User demand



.....Enhanced EMS applications Overview.....

**Wide Area Visualization**  
e-terravision

# Golf and Project Management Office

- Like coaching the Ryder Cup Team.
- One thing in golf you need a strategy for the course.
- Strategy that each team member understands
- Strategy for each hole .
- However every shot does not turn out the way you hope so you need to assess alternatives and risk verse reward.
- Golf also requires reassessment of your strategy and the approach you take. Have a plan A , B and explore other options.





Blue Lines = Existing Golf Course Features

HOLE	◆	■	○	▲	PAR
4	550	520	605	454	5



HOLE	■	◆	■	○	▲	PAR
4	615	545	525	480	450	5







GRID

ALSTOM

# Strategic Partners Team Results

- The long term sustainability of the integrated system beyond the contract.
- Transfer of knowledge
- Provide solutions that are scalable (growth)
- Upgradeable by subsystems
- Take the knowledge learned for supporting moving the technology, new business drivers etc forward as an industry
- On time, On Budget deliveries that meet and exceed end clients expectation

# 2013 PMI Project of the Year Award (Seattle)



# Ryder Cup Golf Team



GRID

**ALSTOM**



[www.alstom.com](http://www.alstom.com)

**ALSTOM**